



Utility Tool For Mobile Manual

(Rev. 1.0)

Contents

1. Manual Information.....	1
2. Operating System(OS) Environment.....	1
3. Utility Tool Preparation.....	1
4. Using Utility Tool.....	2
4.1 Add Printer.....	3
4.2 Modify Printer.....	5
4.3 Delete Printer.....	7
4.4 Connect Test.....	8
4.5 Functions.....	10

1. Manual Information

This Manual provides information on usage of the printer's Utility Tool For Mobile according to PC operating system.

We maintain ongoing efforts to enhance and upgrade the functions and quality of all our products. As follows, product specifications and/or Utility Tool manual content may be changed without prior notice.

2. Operating System(OS) Environment

Utility Tool is applicable to the following operating system:

- Microsoft Windows 10 (32 bit/64 bit)
- Microsoft Windows 8 (32 bit/64 bit)
- Microsoft Windows 7 SPI (32 bit/64 bit)
- Microsoft Windows Vista SP2 (32 bit/64 bit)
- Microsoft Windows XP Professional SP3 (32 bit)

3. Utility Tool Preparation

The Utility Tool is included in the enclosed CD.


The installation file name is PrinterUtilityForMobile VX.X.X.X

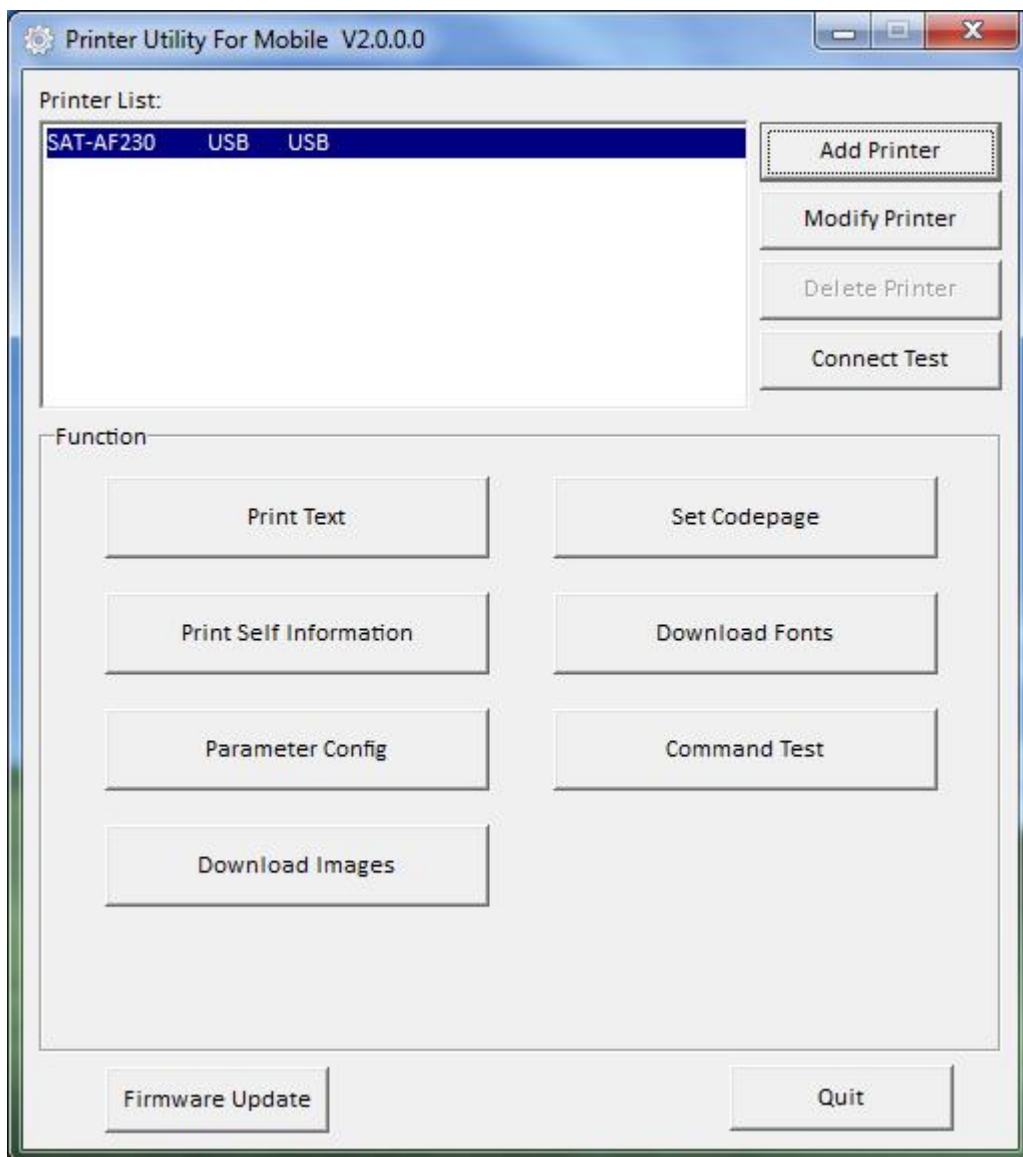
eg : PrinterUtilityForMobile V2.0.0.0

4. Using Utility Tool



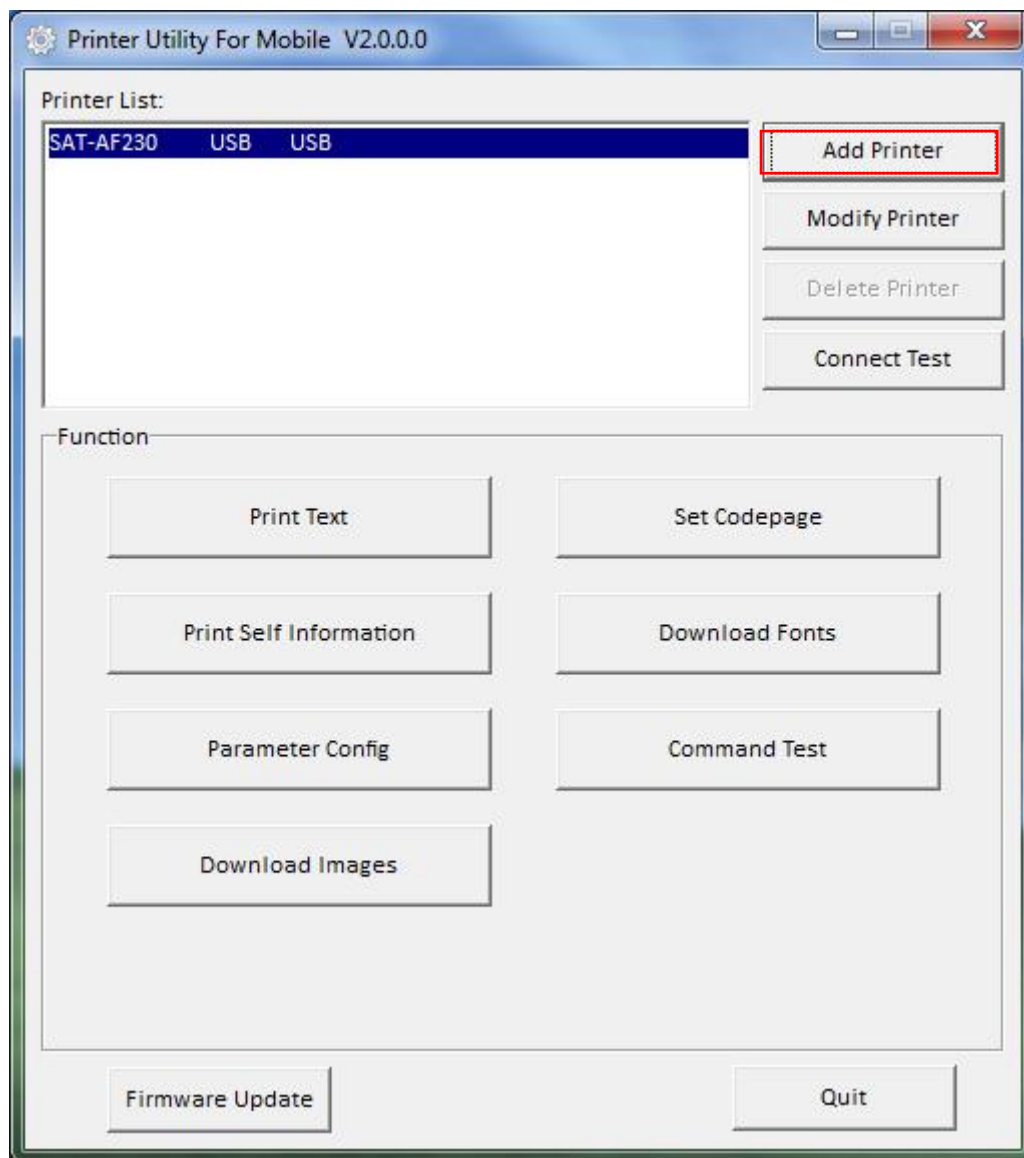
Warning: Under different operating system, the screen has slight difference. Please operate it according to the tips. Take Windows7 as example.

- 1) Unzip the compressed package file, then open the folder, click  to open the Printer Utility For Mobile.

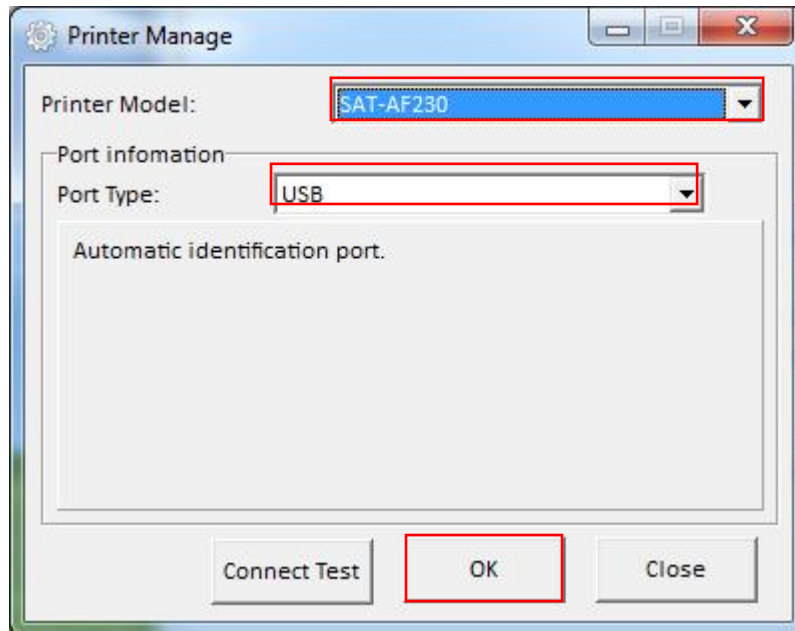


4.1 Add Printer

- 1) Click “Add Printer”.



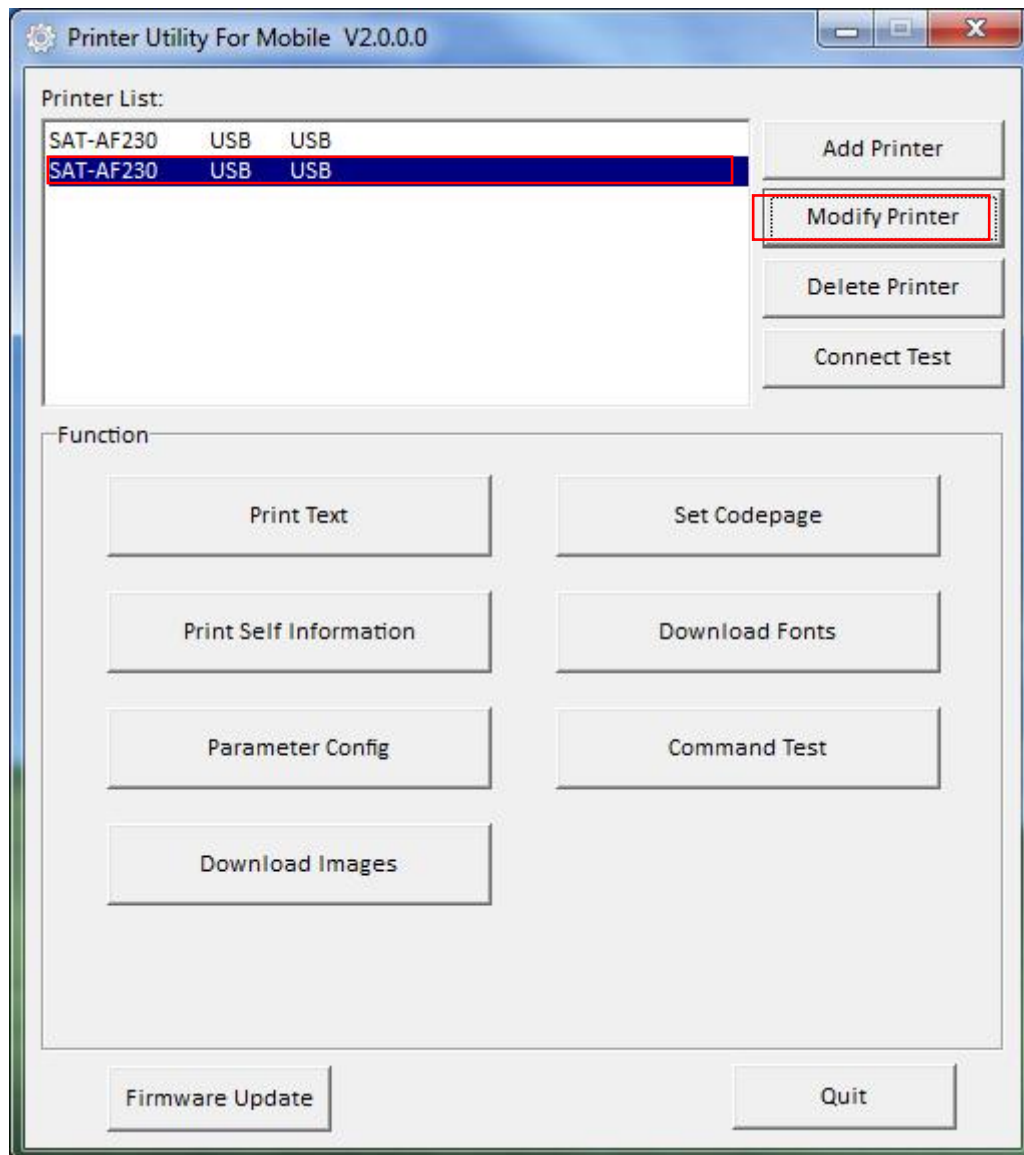
2) Choose the right printer model and port type, then click “OK”.



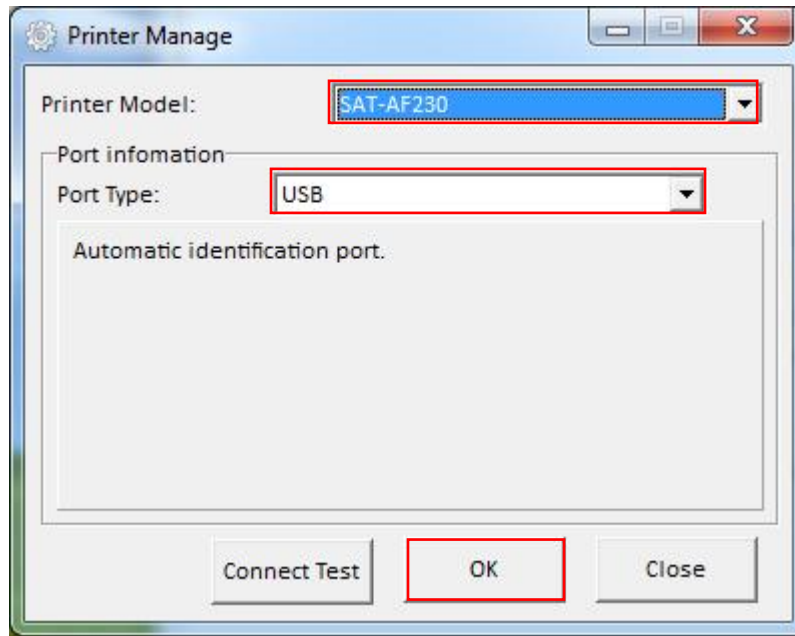
3) Add printer is finished.

4.2 Modify Printer

1) Choose the printer which you want to modify in the list. Click on "Modify Printer".



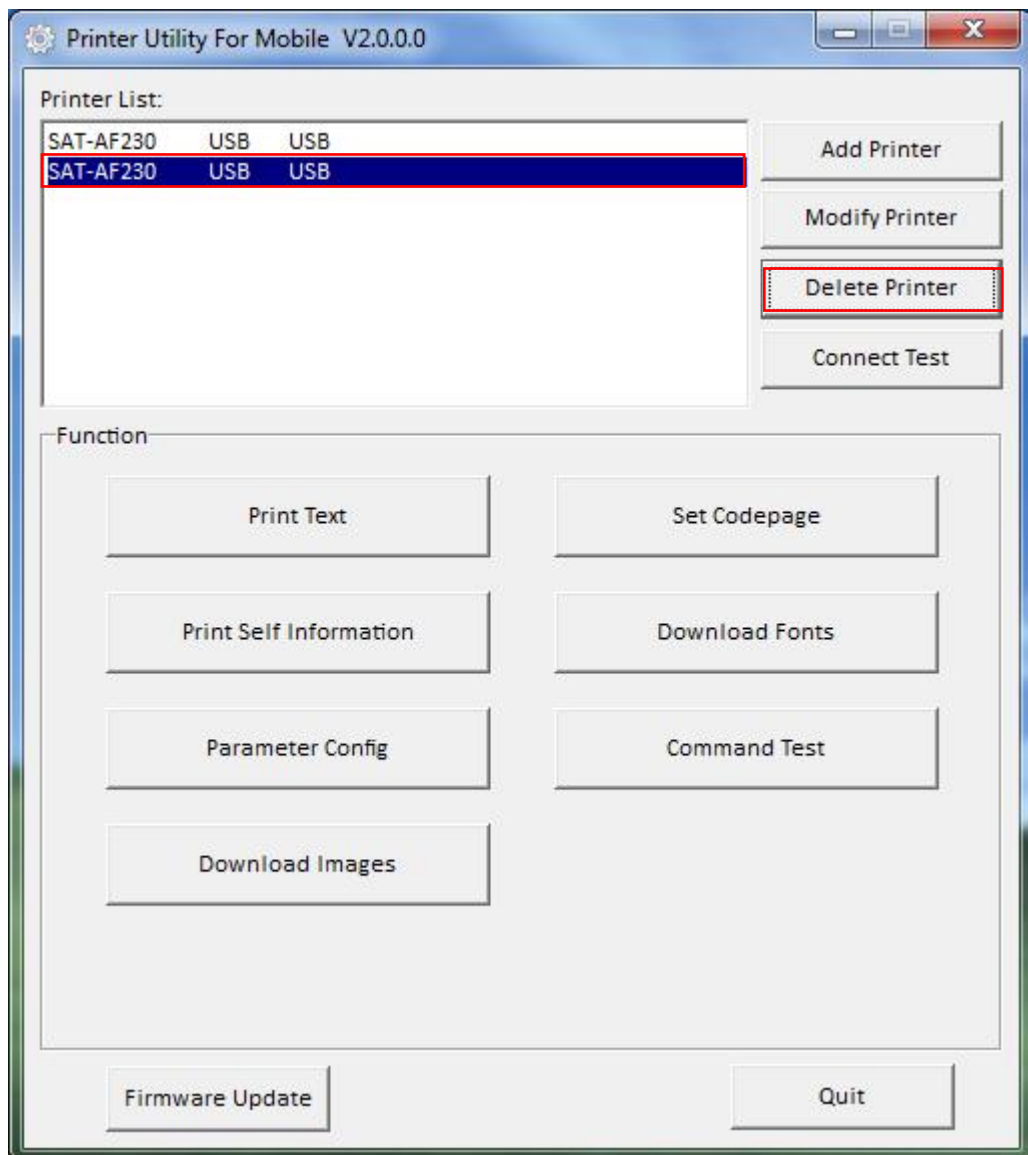
- 2) Choose the new model and new port, then click “OK”.



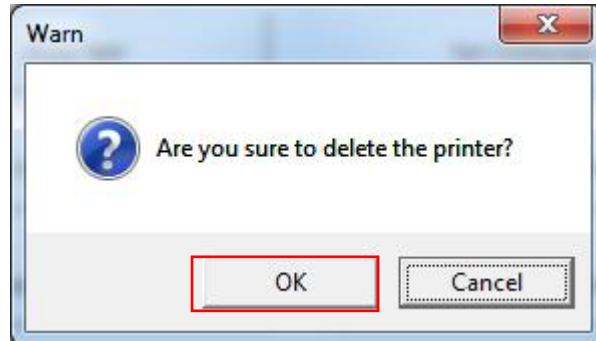
- 3) Modify the new printer is finished.

4.3 Delete Printer

- 1) Choose the printer which you want to delete in the list, then Click on "Delete Printer".

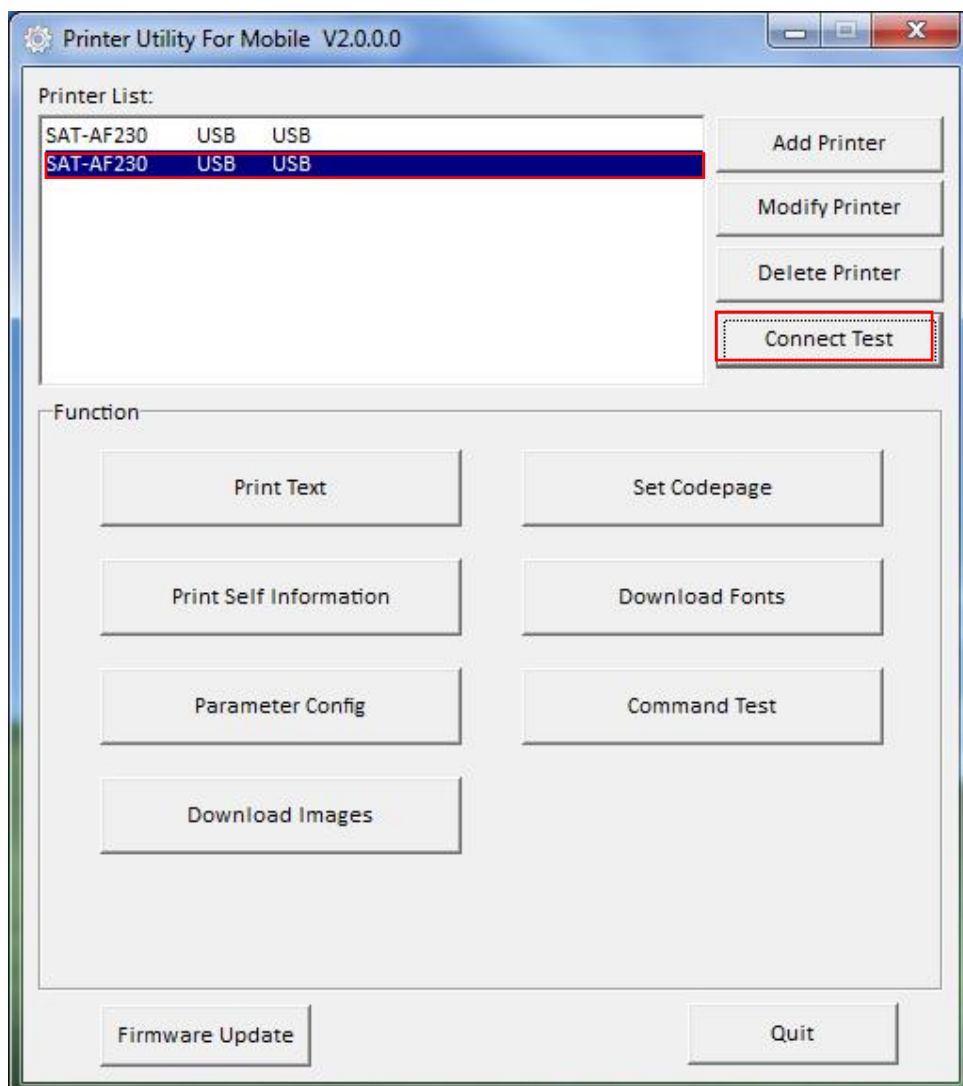


- 2) Click “OK”, then the printer is deleted.



4.4 Connect Test

- 1) Click “Connect Test”.



2) If the connection is successful, it will appear the following window. If the connection is unsuccessful, please connect the printer with computer.



Note:

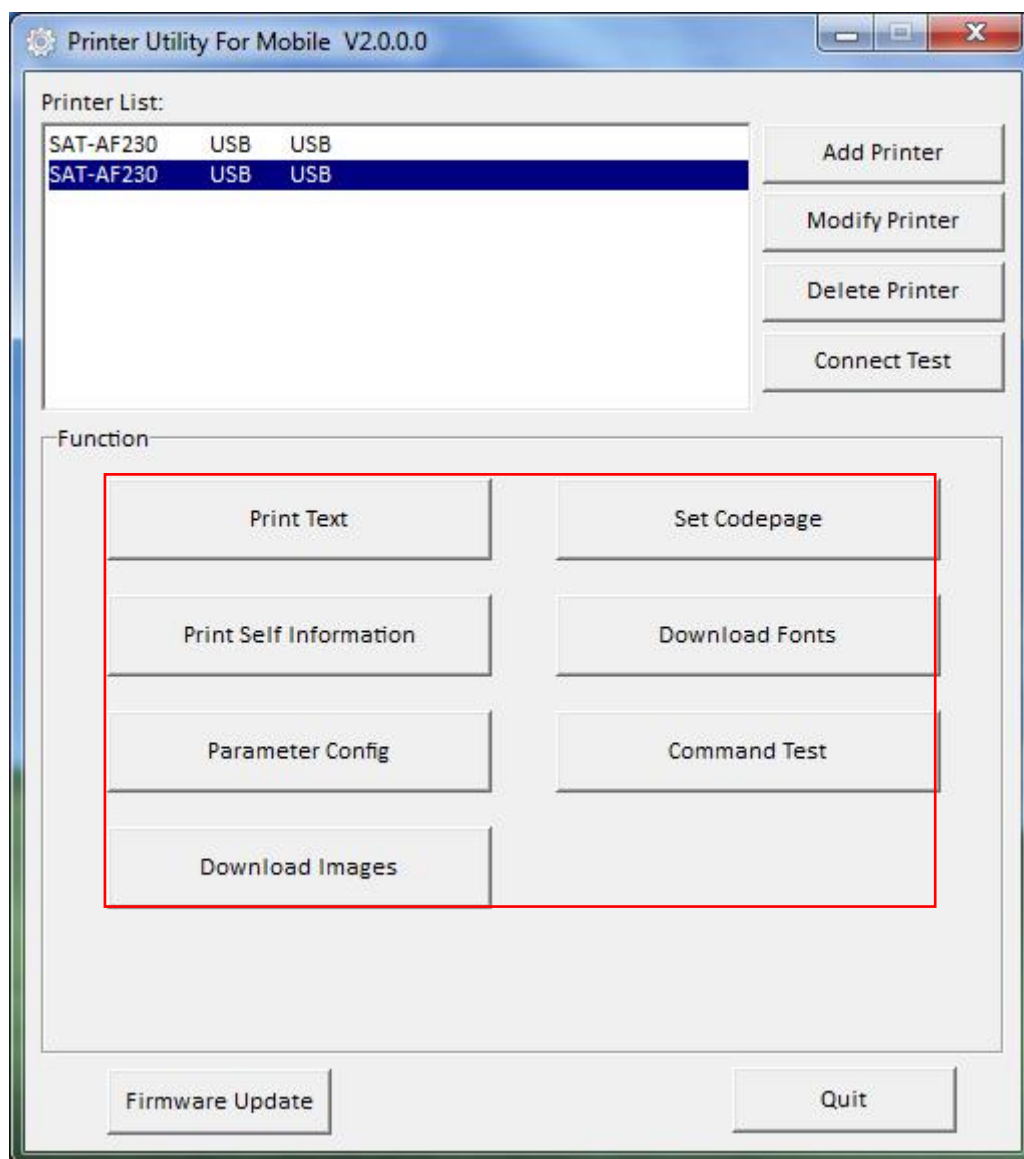
- ✧ Make sure printer is connected with computer and power on.
- ✧ Make sure printer is loaded with paper.
- ✧ Before using the following function, carry out the "Connect Test" first.

4.5 Functions

The function of Printer Utility For Mobile contains following items. Click the button and printer will execute the appropriate action.

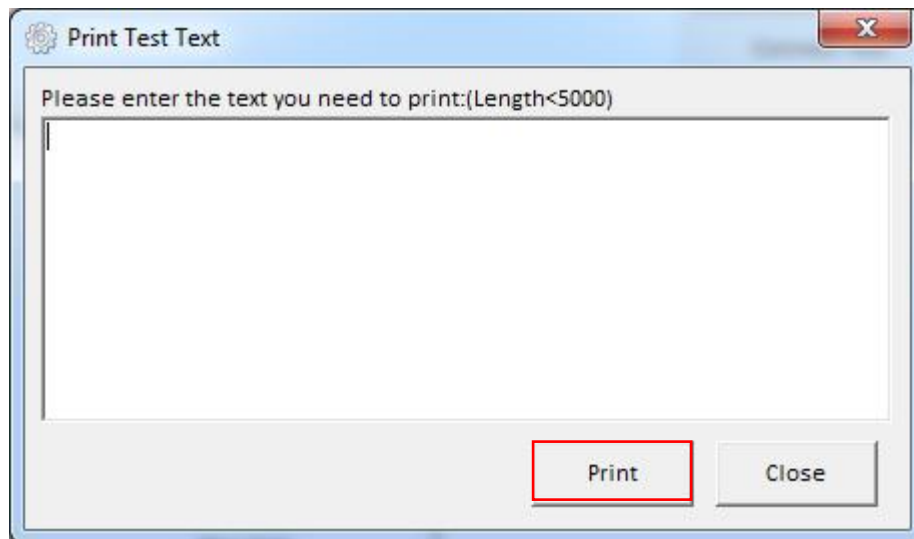
NOTE: The following screen may differ depending on the device to which you connect.

Please operate it according to the actual interfaces.



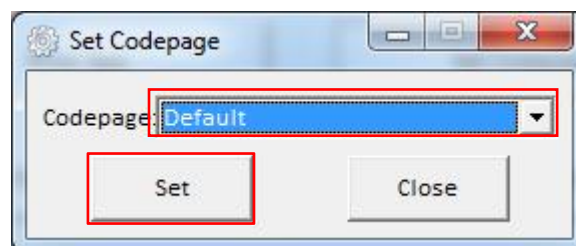
◆ Print Text

In Print Text, you can send commands to printer. Input the command in the input box.



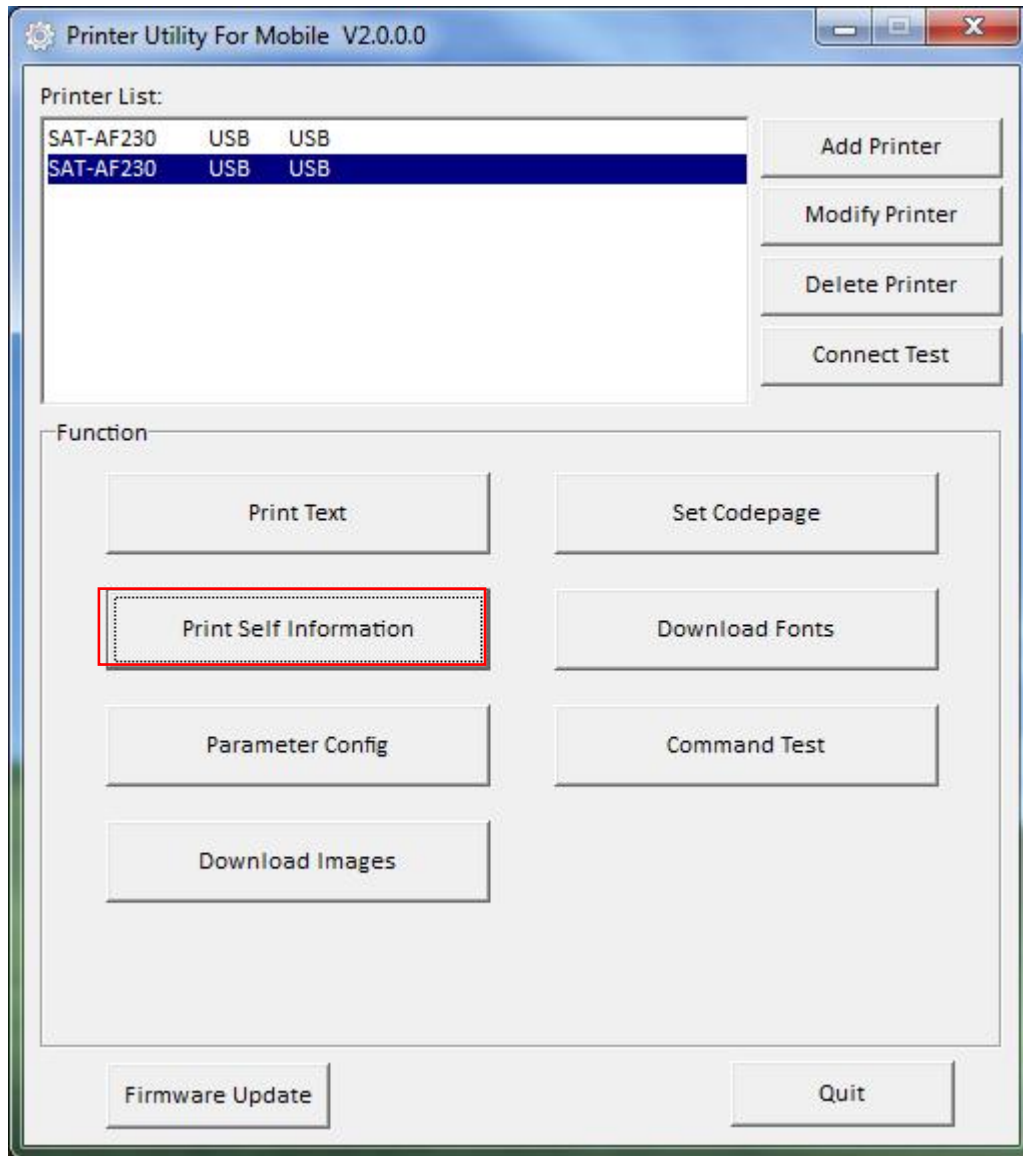
◆ Set Codepage

Click on "Set Codepage", choose the codepage from the drop-down menu, click "Set" to save it.



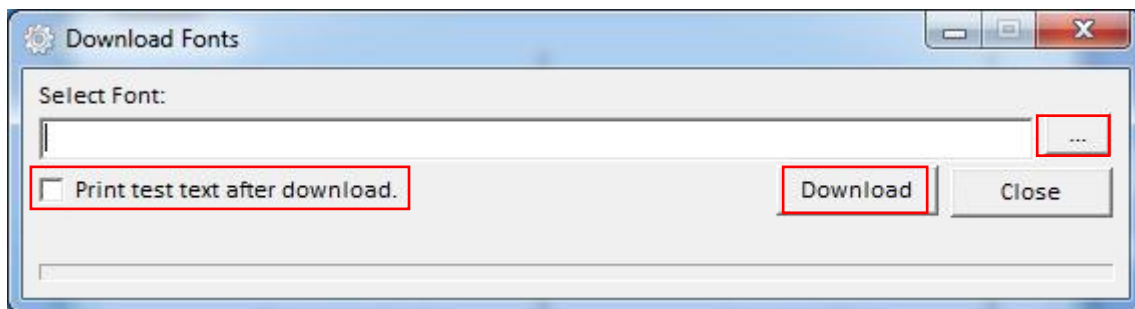
◆ Print Self Information

Click "Print Self Information", the printer will print out self information.



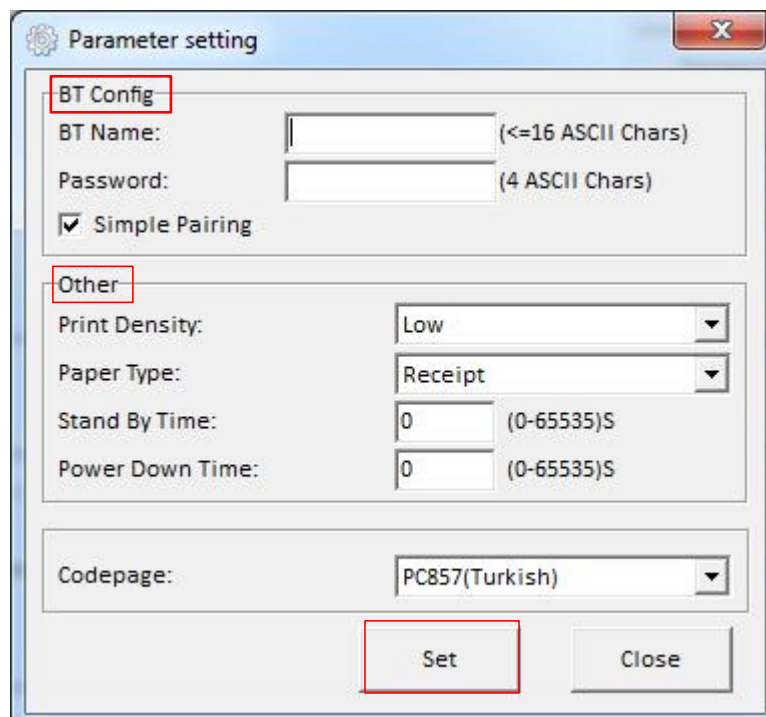
◆ Download Fonts

Choose the font from existing files and click “Download”. If you choose “Print test text after download”, the printer will print the test text after downloading the font.



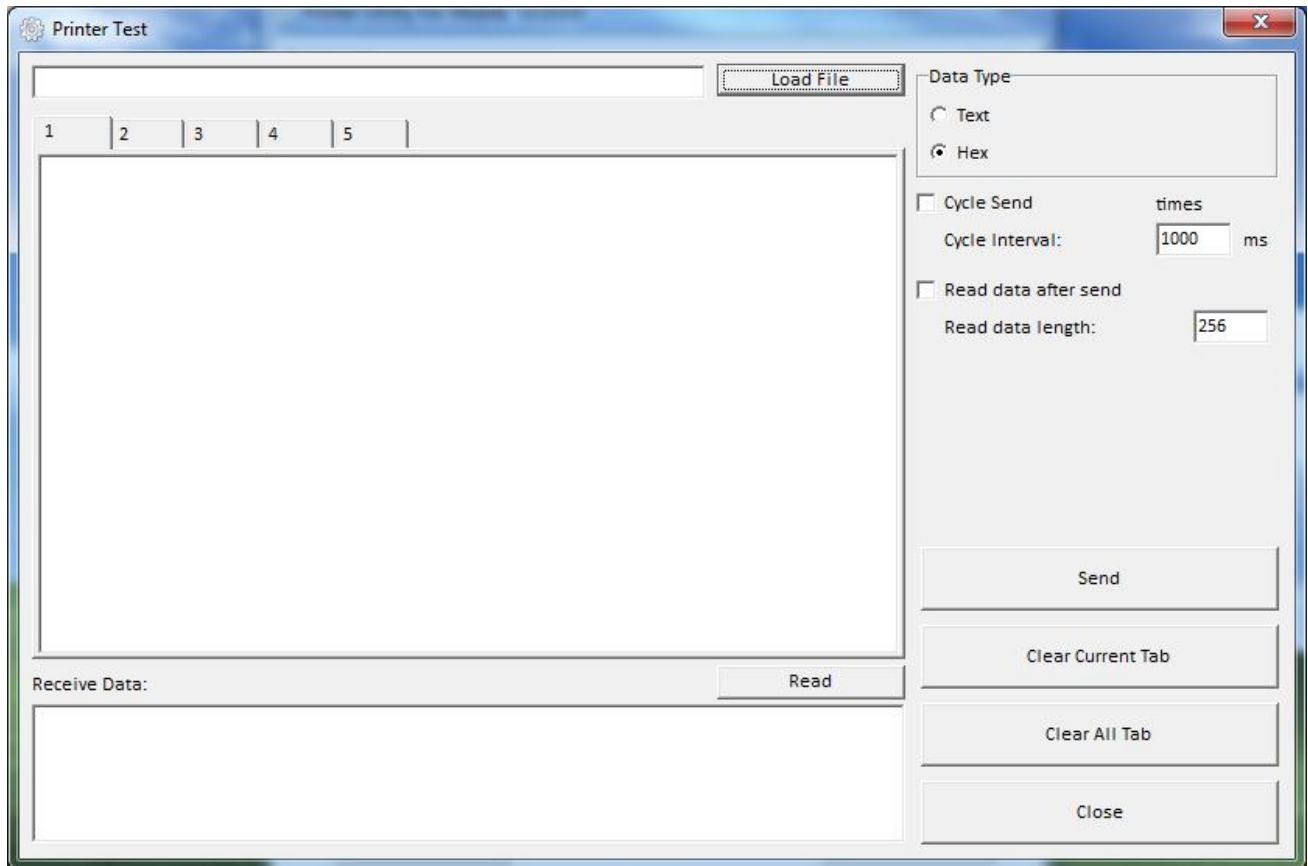
◆ Parameter Config

Click on “Parameter Config”, According to the different needs, choose “BT Config”, “Other” in “Parameter setting”. Click “Set” to save it.



◆ Command Test

Choose the item and the printer will execute appropriate action.



◆ Download Images

Click “Download Images”, Choose “Add” or “Delete” to add or delete images.

